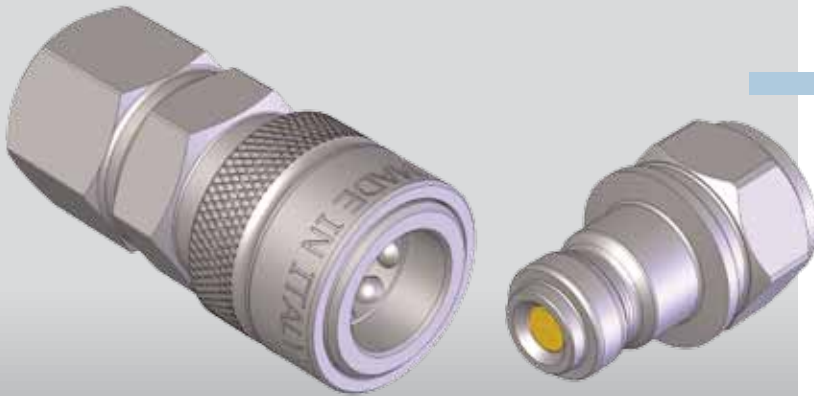


1000 bar/115
ALTISSIMA PRESSIONE
UHP COUPLINGS
HÖCHSTDRUCK
ULTRA HAUTE PRESSION



Caratteristiche tecniche

- Compatibilità: Cejn 115
- Occlusione: valvola
- Aggancio: sfere radiali
- Materiale: acciaio ad alta resistenza
- Finitura: Zn-Fe (Cr III)
- Filettature: BSP - NPT
- Guarnizioni standard: miscela speciale
- Temperatura d'esercizio: -35 °C +130 °C
- Pressioni di esercizio: 1000 bar
- Fattore di sicurezza: 1:2,5
- Collaudo: in elio, 100% a bassa e alta pressione
- Connessione in pressione: non consentita

Nominal size				Max working pressure	Rated flow	Max flow rate	Min burst pressure			Fluid spillage
DNP	BG	ISO	mm				Male	Female	Coupled	
06	1	6.3	2,5	100 MPa	6 l/min	6 l/min	250 MPa	250 MPa	250 MPa	0,008 cc

1 MPa = 145,04 psi • 1 l = 0,264 gal

Technical data

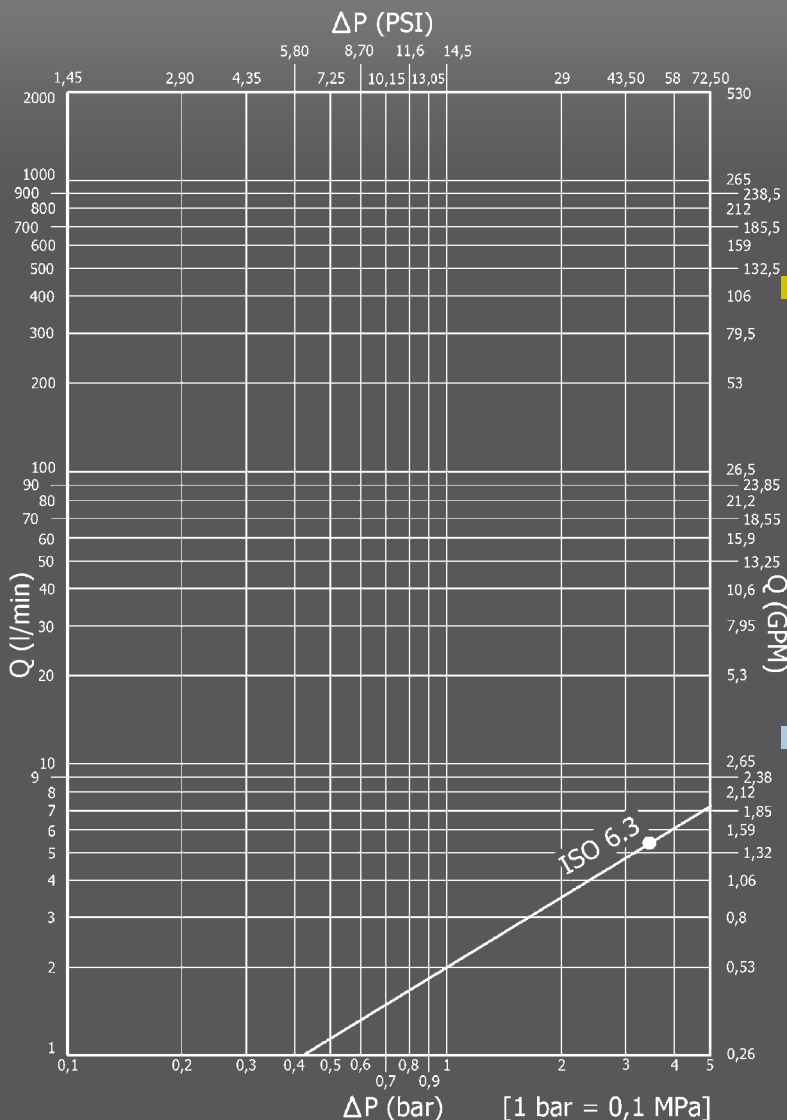
- Compatibility: Cejn 115
- Occlusion: poppet
- Locking: radial balls
- Material: high resistance steel
- Finishing: Zn-Fe (Cr III)
- Threads: BSP - NPT
- Standard seals: special compound
- Working temperature: -35 °C +130 °C
- Working pressure: 1000 bar
- Safety factor: 1:2,5
- Test: with Helium, 100% at low and high pressure
- Connection under pressure: not allowed

Technische Merkmale

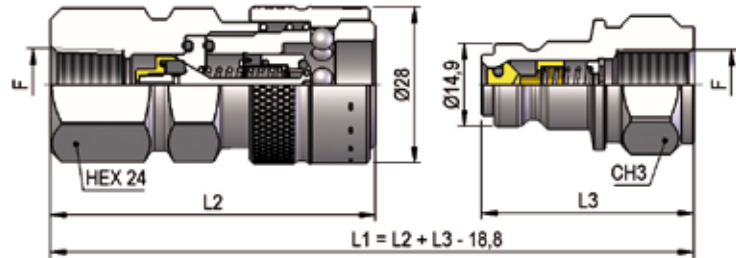
- Kompatibilität: Cejn 115
- Verschluss: ventil
- Kupplung: Radialkugeln
- Werkstoff: hochwertiger Stahl
- Ausführung: Zn-Fe (Cr III)
- Gewinde: BSP - NPT
- Standard-Dichtungen: Spezialcompound
- Betriebstemperatur: -35 °C +130 °C
- Betriebsdruck: 1000 bar
- Sicherheitsfaktor: 1:2,5
- Test: mit Helium, 100% bei niedrigen und hohen Druck
- Kuppeln unter Druck: nicht möglich

Caracteristiques techniques

- Compatibilité: Cejn 115
- Obturation: clapet
- Accrochage: billes radiales
- Matériel: acier à haute résistance
- Traitement: Zn-Fe (Cr III)
- Taraudage: BSP - NPT
- Joints standard: composé spécial
- Température de service: -35 °C +130 °C
- Pression de service: 1000 bar
- Facteur de sécurité: 1:2,5
- Test: avec hélium, 100% à basse et haute pression
- Connexion sous pression: pas possible

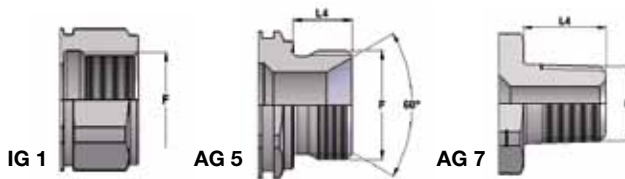


PCJ5 DN06 - BG 1 - ISO 6.3



THREADS	L2	CH3	L3	L4	F	STANDARD	FEMMINA - FEMALE - MUFFE - FEMELLE			MASCHIO - MALE - STECKER - MALE		
							COD. F	Weight (g)	Packaging (pcs.)	COD. M	Weight (g)	Packaging (pcs.)
IG 1	54,3	22	38,1		BSP 1/8"	DIN 3852-2-X	PCJ5.0604.002	176	100	PCJ5.0604.003	78	150
	61,3	22	38,1		BSP 1/4"	DIN 3852-2-X	PCJ5.0606.002	195	100	PCJ5.0606.003	71	150
	58,3	22	35,7		NPT 1/4"	ANSI B1.20.1	PCJ5.0606.012	186	100	PCJ5.0606.013	67	150
	63,3	24	39,6		BSP 3/8"	DIN 3852-2-X	PCJ5.0610.002	193	100	PCJ5.0610.003	84	150
	60,3	24	39,6		NPT 3/8"	ANSI B1.20.1	PCJ5.0610.012	185	100	PCJ5.0610.013	78	150
AG 7	62,3	22	63,2	14	NPT 1/4"	ANSI B1.20.1	PCJ5.0606.022	172	100	PCJ5.0606.023	122	100
AG 5	61,3	22	48,8	12	BSP 1/4"	DIN 3852-2-A	PCJ5.0606.212	171	100	PCJ5.0606.213	90	150
	61,3	22	61,1	12	BSP 3/8"	DIN 3852-2-A	PCJ5.0610.212	174	100	PCJ5.0610.213	126	100

THREADS



PCJ5 - ACCESSORI / ACCESSORIES / ZUBEHÖR / ACCESSOIRES

PLASTIC CAPS

NOMINAL SIZE			FEMALE DUST PLUG				MALE DUST CAP				COLOUR	MATERIAL		
DNP	BG	ISO	COD. F	Dimensions			Weight (g)	COD. M	Dimensions			Weight (g)		
06	1	6.3	SPCJ.06002	D	L	D1	16	SPCJ.06003	D	L	D1	13		
				29	110	20,5			29	110	22,5			

